

System-compatible bonding of EVALON® maintenance walkway tiles with alwitra EVATAACK

Intended use

EVALON® maintenance walkway tiles are used to protect the waterproofing and to mark the maintenance walkways on flat roofs. Non-slip surfaces and increased perforation protection of the waterproofing are essential requirements for the materials used for such purposes. EVALON® maintenance walkway tiles meet these requirements, and the textured surface provides a strong grip, even on slightly sloped and wet areas. Moreover, the tiles also provide for load distribution. The visible delineation between waterproofing membrane and protective tiles has the advantage of clearly marking the roof areas people can safely walk on.

Area of application

alwitra EVATAACK is an adhesive and sealant used for reliable and permanent bonding of EVALON® maintenance walkway tiles to EVALON® waterproofing membranes. The maintenance walkway tiles are bonded with alwitra EVATAACK to clean and dry fleece-backed EVALON® waterproofing membranes. Soiled bonding areas must be cleaned thoroughly with alwitra membrane cleaner. No additional fixing measures required.

IMPORTANT:

Stable, system-compatible bonding of EVALON® maintenance walkway tiles to EVALON® waterproofing membranes must only be carried out with alwitra EVATAACK adhesive and sealant.

Other fixing methods such as hot-air or solvent welding are not permitted.



The paste-like alwitra EVATAACK adhesive and sealant is applied to the back of the maintenance walkway tiles.

System-compatible bonding of EVALON® maintenance walkway tiles with alwitra EVATAACK

Application method

An adhesive bead (approx. 10 mm wide) is applied to the lower side all around the maintenance walkway tile close to the edges. Then the tiles are put in place, aligned and slightly pressed on.

It is recommended to install the tiles with a joint spacing of more than 50 mm. alwitra EVATAACK may be visible at some parts along the edges. One cartridge will bond approx. 3 maintenance walkway tiles.



EVALON® maintenance walkway tiles for clearly marking roof areas people can safely walk on.

Technical data:

Adhesive

MS polymer

Consistency

paste-like

Storage temperature

+10 °C to +25 °C

Substrate temperature

+5 °C to +80 °C

Ambient temperature

+5 °C to +40 °C

Quantity applied

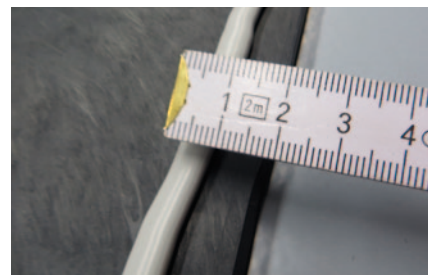
90-100 ml/tile

Open time

approx. 10 min.



For application of alwitra EVATAACK, any standard caulking gun can be used.



For bonding, an adhesive bead (approx. 10 mm wide) is applied all around the lower side of the tile.

alwitra GmbH & Co.
PO Box 3950 .
D-54229 Trier · Germany
Phone: +49 651/9102-0
Fax: +49 651/9102-248
export@alwitra.de . www.alwitra.de

Disclaimer of Warranty:

The information, and, in particular, the recommendations relating to the application and use of our products, are given based on our current knowledge and experience under normal conditions, provided that the products have been stored and handled properly. Due to differences in materials, substrates and actual site conditions no warranty in respect of fitness for a particular purpose, nor any liability arising out of any legal relationship whatsoever, can be inferred neither from this information, nor from any oral consultation, except for cases of proven wilful intent or gross negligence on our part. In such cases, the user has to provide evidence that, along with his request, he has submitted to alwitra in writing, on time and in full all information required for a factual and relevant assessment by alwitra. The user of the product must verify the product's suitability for the intended application and purpose. alwitra reserves the right to make changes to the product specifications. Third party proprietary rights must be complied with. Apart from that, our latest General Terms and Conditions shall apply. The latest edition of the local Product Data Sheet shall apply, copies of which will be supplied on request.