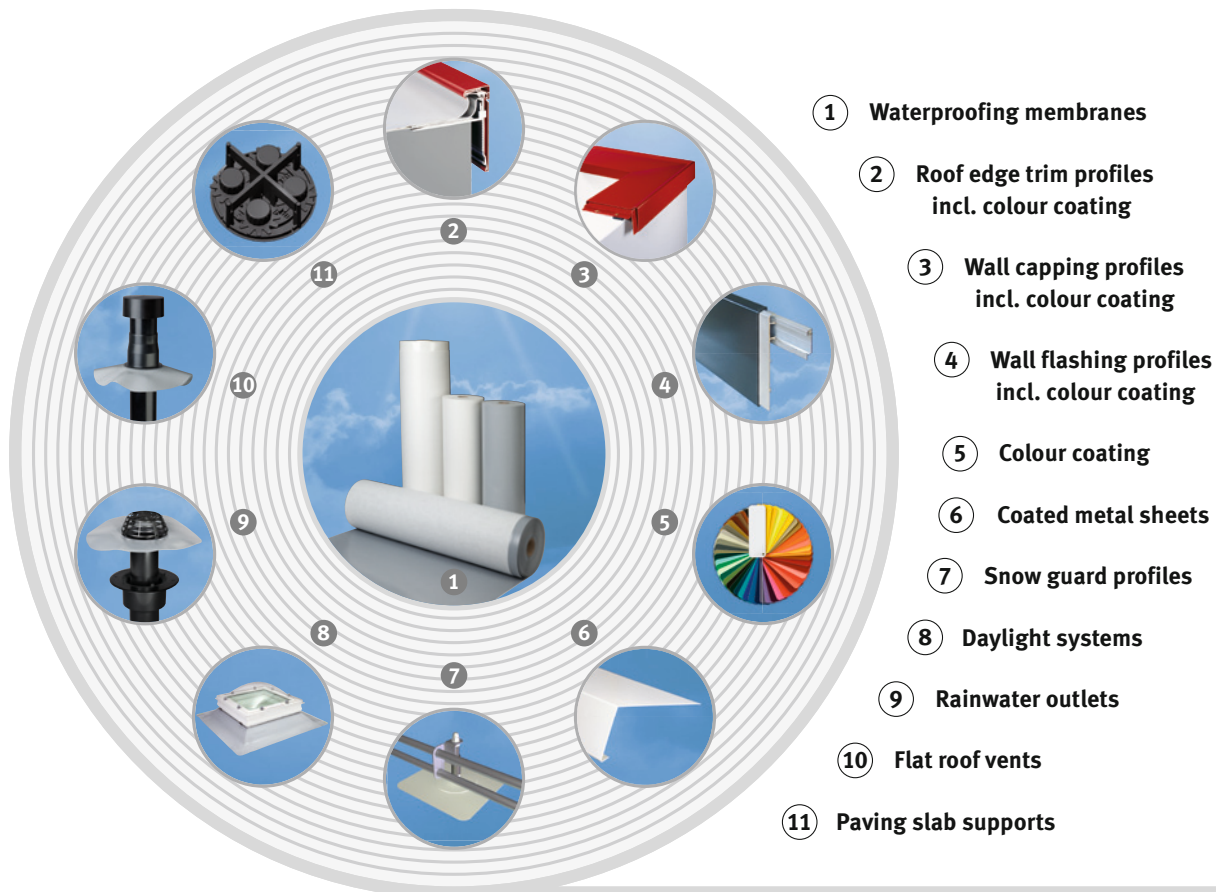


Product Range



alwitra waterproofing system

EVALON® and EVALASTIC® waterproofing membranes are part of the proven alwitra waterproofing system. This system comprises:



alwitra was the first enterprise of the industry to introduce relevant Environmental Product Declarations of the Institute Construction and Environment (Institut Bauen und Umwelt e. V. - IBU) for the EVALON® and EVALASTIC® waterproofing membranes.

For certifications according to DGNB, LEED or BREEAM alwitra provides appropriate product fact sheets.



Innovations for long-term reliable flat roofs

Integrated flat roof solutions are key



Choosing the right product will be essential for the longevity of the flat roof. A flat roof requires long-term proven integrated product systems, inter alia to ensure professional flashing against other construction elements. This means professional handling and joining of proven materials according to their properties.

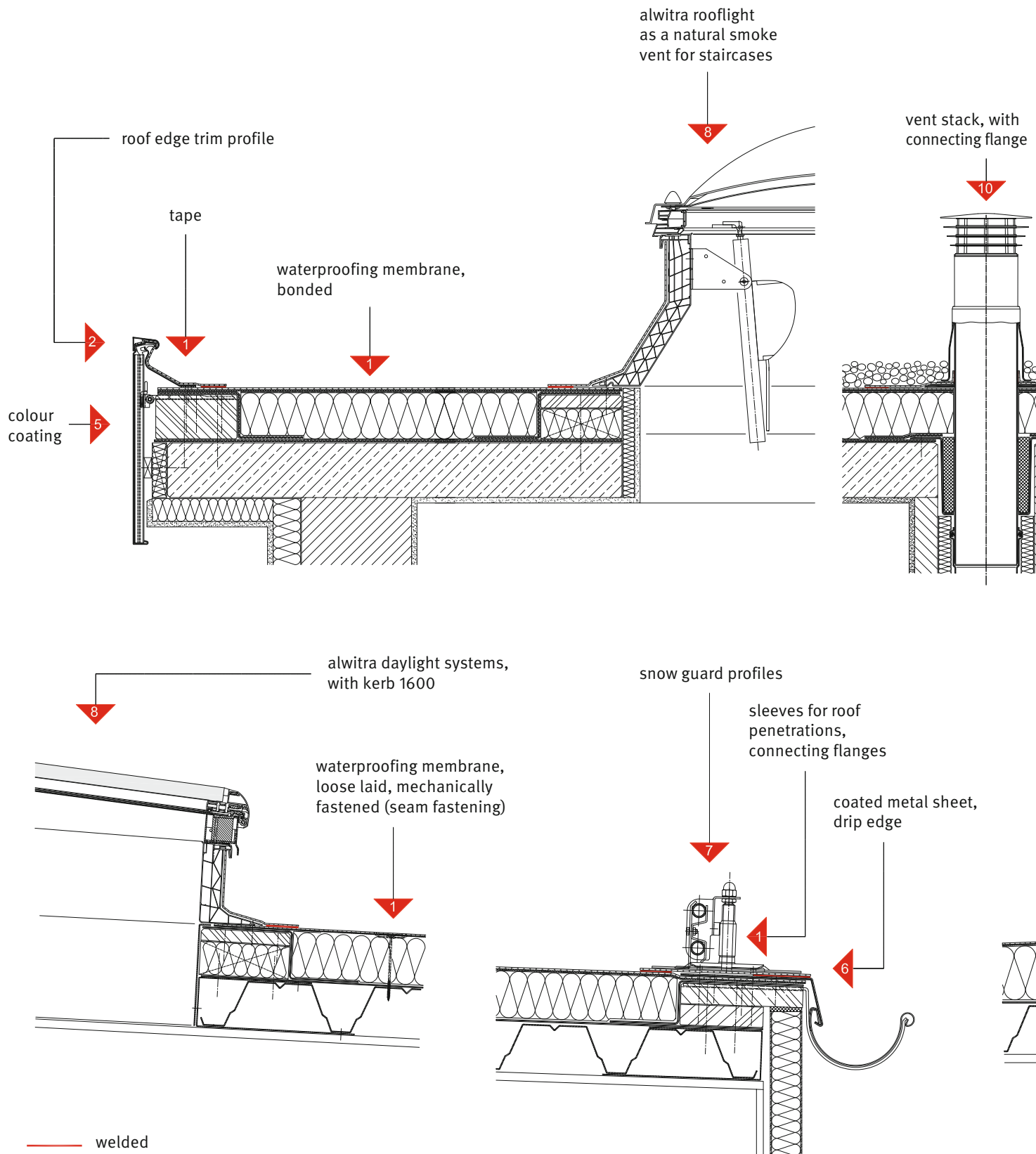
All alwitra waterproofing products share a common feature: At the flashing area, they are equipped with a flashing strip / tape / connecting flange made of the same material as the waterproofing membrane itself, making for a reliable and homogeneous flashing against the waterproofing membranes.

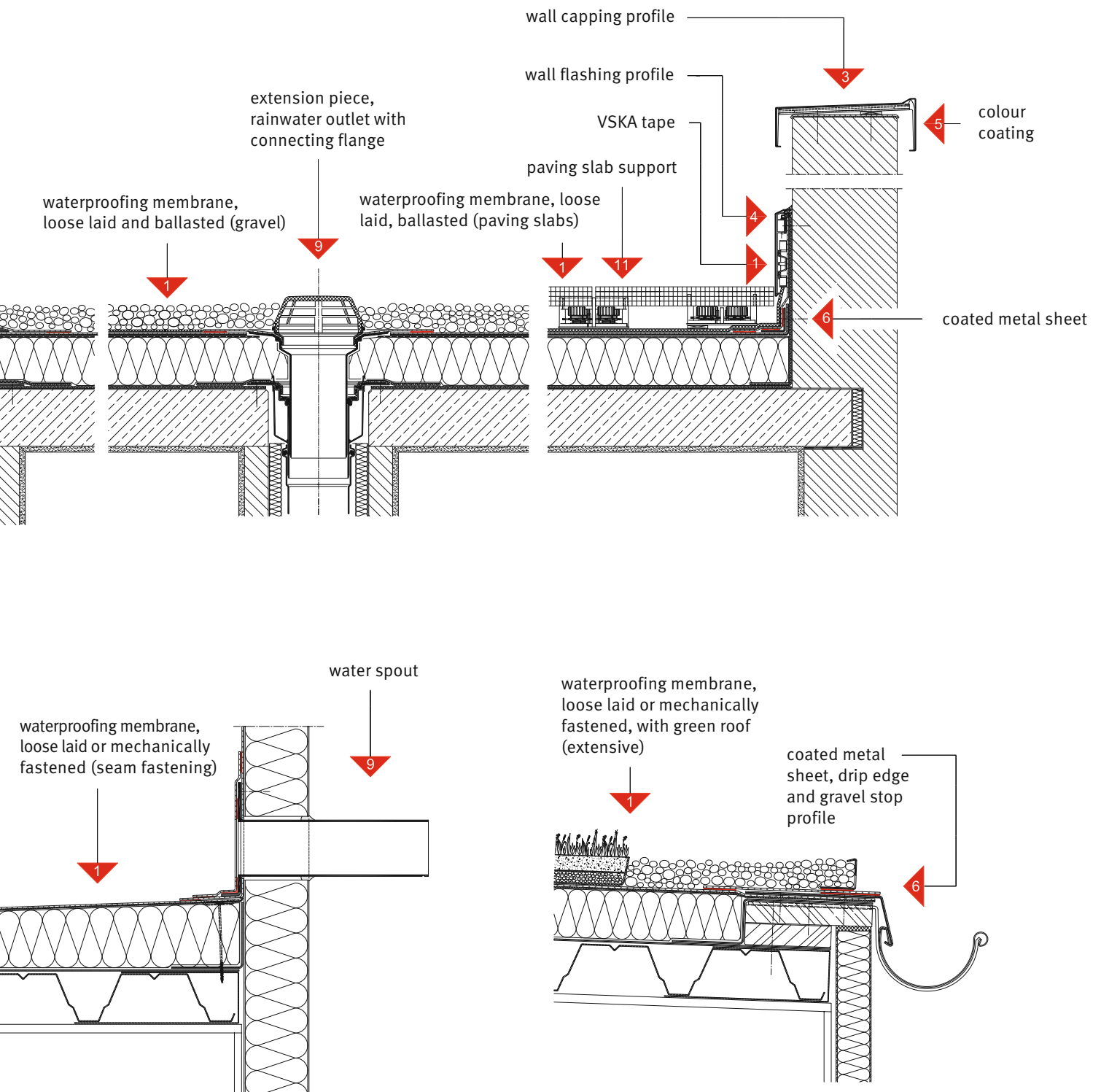
- Homogeneous seam connection by hot air or solvent welding
- No cross-linking, thus permanently weldable
- Products meet all relevant standards

alwitra specialises in flat roofs. For us, the extraordinary has become the standard, providing the basis for a long-term reliable flat roof in both materials and handling.

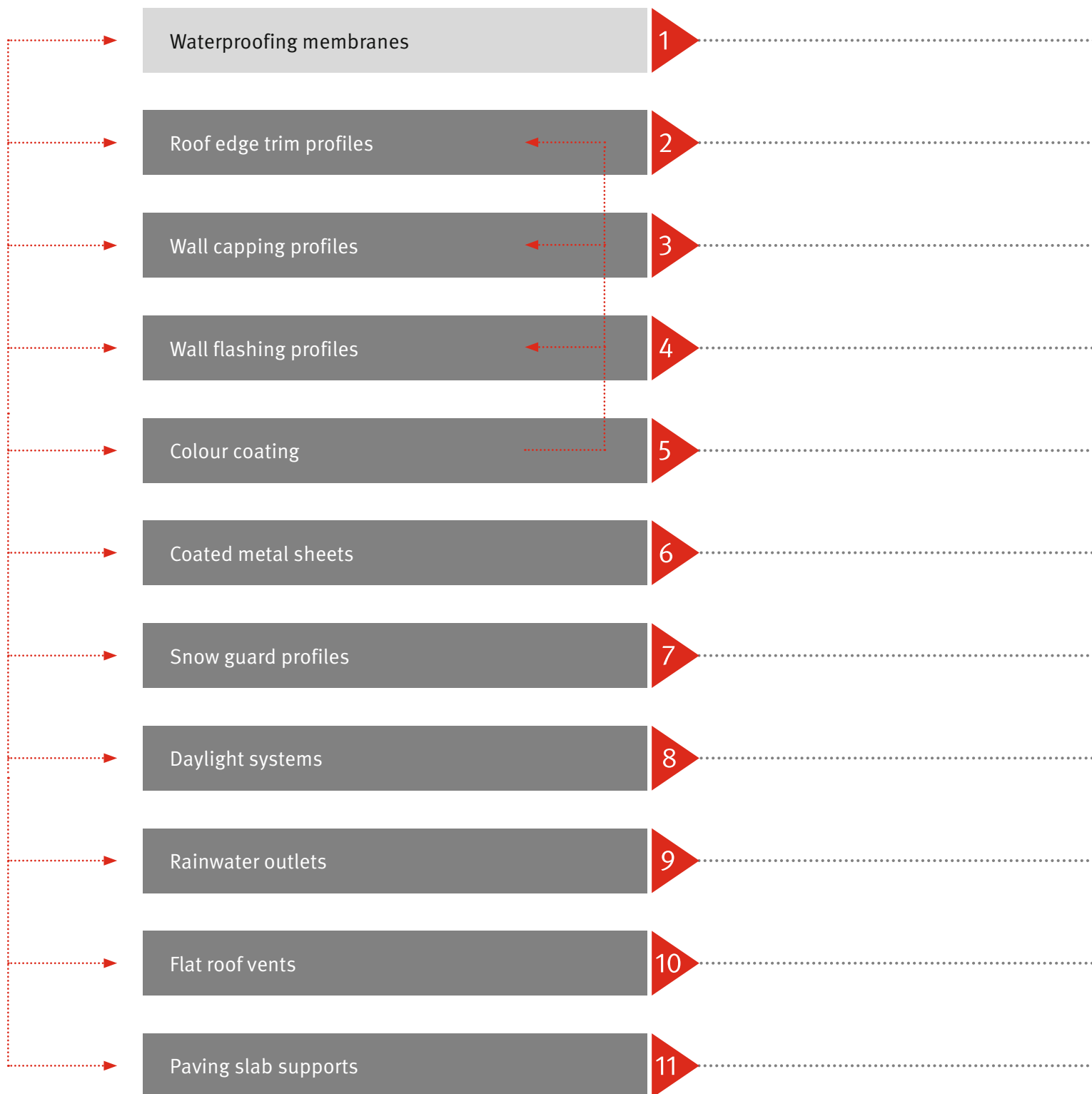
**No matter what your idea may look like:
The best solution will be alwitra.**

alwitra. A one-stop solution from one roof edge to the other.

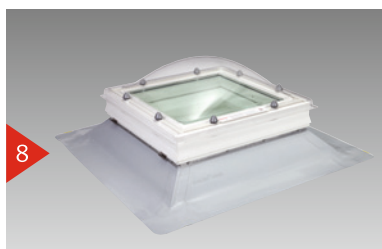
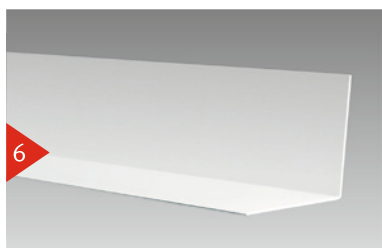
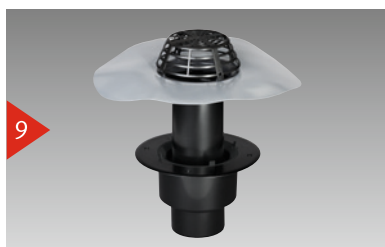
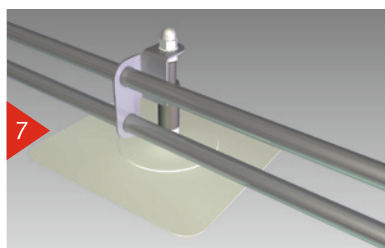




The alwitra waterproofing system:



Perfectly matched products for smart roof waterproofing solutions



- Advanced
- Durable
- Reliable
- Safe and
- Economical

through a combination of quality in

- Function
- Design
- Construction
- Technology

for both

- New build and
- Refurbishment

Your benefits

- Expert advice from our experienced Technical Consultants
- Complete product support service from planning to installation.



alwitra GmbH & Co.

54229 Trier · Germany

Phone: +49 651 9102-0 · Fax: +49 651 9102-248

export@alwitra.de · www.alwitra.de