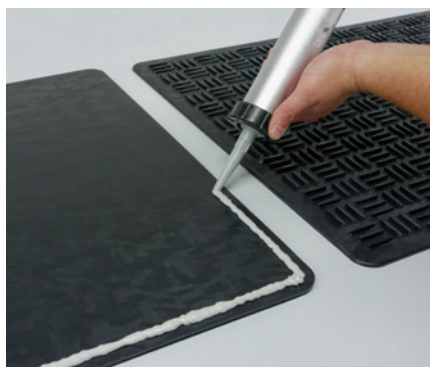


EVALON® Maintenance Walkway Tiles

1. Intended use

Various statutes, regulations, directives, technical rules and standards refer to the responsibility of investors, operators and designers to ensure the safety of people/ personnel on roofs by taking suitable precautions (e.g. by installing maintenance walkways). In particular, this is important for people carrying out roofing, installation, maintenance or inspection works on roofs. EVALON® maintenance walkway tiles are used **to mark the inspection and maintenance walkways (also provides additional protection for the waterproofing)** on flat roofs covered with EVALON®. The textured surface provides a strong grip, even on sloped and wet areas. Moreover, the maintenance walkway tiles also provide for load distribution. Bonding using alwitra EVATAK to EVALON® waterproofing



membranes prevents any movement of the maintenance walkway tiles even at increased wind loads. The visible delineation between waterproofing membrane and maintenance walkway tiles has the advantage of clearly marking the roof areas (inspection and maintenance walkways) people can safely walk on.

2. Material

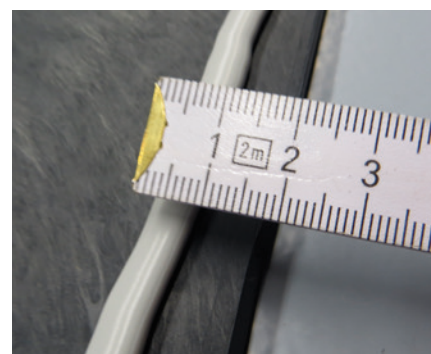
Analogous to EVALON® waterproofing membranes with regard to the framework for material recycling (see EPD life cycle assessment), UV stable and weather-proof.

3. Product design/dimensions

Colour	dark grey
Surface	textured
Lower side	even
Length x width	approx. 800 x 600 mm
Overall thickness	approx. 8.5 mm
Texture height	approx. 4 mm
Weight	approx. 7.3 kg/m ² or approx. 3.5 kg/tile

4. Application

The maintenance walkway tiles are bonded to clean and dry roof areas covered with fleece backed EVALON® waterproofing membranes using alwitra EVATAK only. An adhesive bead (approx. 10 mm wide) is applied to the lower side all around the maintenance walkway tile close to the edges. One cartridge will bond approx. 3 maintenance walkway tiles. It is recommended to install the tiles with a joint spacing of approx. 50 mm. On older and soiled roof surfaces the bonding areas must be cleaned thoroughly with alwitra membrane cleaner. No additional fixing measures required.



alwitra GmbH
54229 Trier · Germany
Phone: +49 651 9102-0
Fax: +49 651 9102-248
export@alwitra.de · www.alwitra.de

Disclaimer of Warranty:

The information, and, in particular, the recommendations relating to the application and use of our products, are given based on our current knowledge and experience under normal conditions, provided that the products have been stored and handled properly. Due to differences in materials, substrates and actual site conditions no warranty in respect of fitness for a particular purpose, nor any liability arising out of any legal relationship whatsoever, can be inferred neither from this information, nor from any oral consultation, except for cases of proven wilful intent or gross negligence on our part. In such cases, the user has to provide evidence that, along with his request, he has submitted to alwitra in writing, on time and in full all information required for a factual and relevant assessment by alwitra. The user of the product must verify the product's suitability for the intended application and purpose. alwitra reserves the right to make changes to the product specifications. Third party proprietary rights must be complied with. Apart from that, our latest General Terms and Conditions shall apply. The latest edition of the local Product Data Sheet shall apply, copies of which will be supplied on request.

Technical changes reserved. As of 05/2020